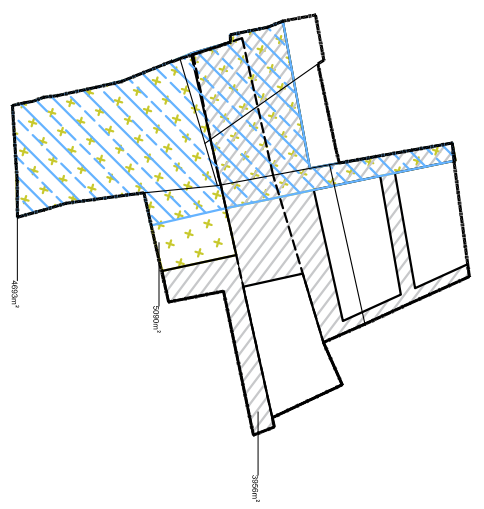
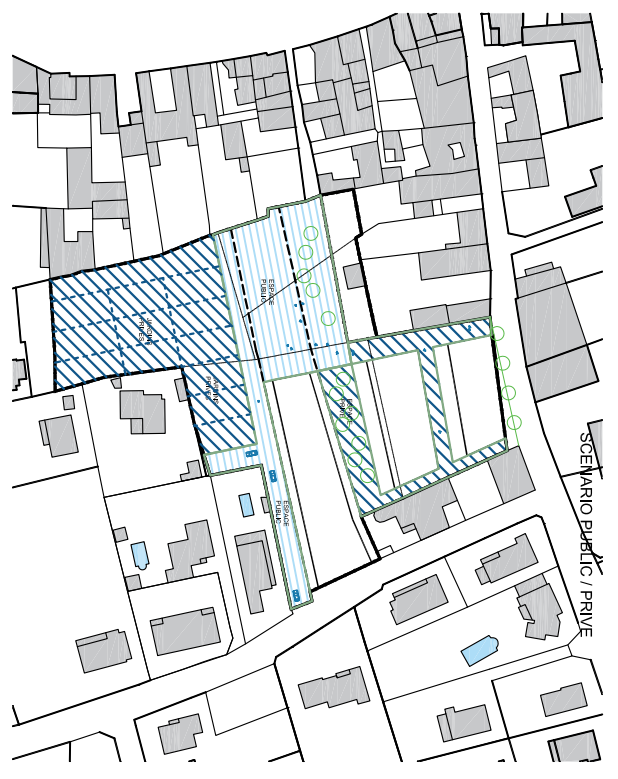




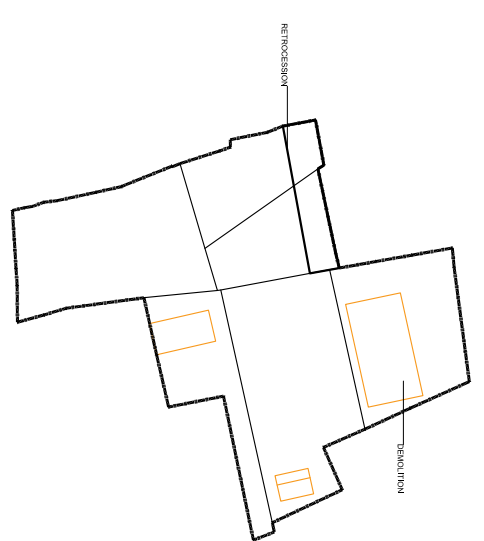
DONNEES DU SITE:

AUTHENTIQUE

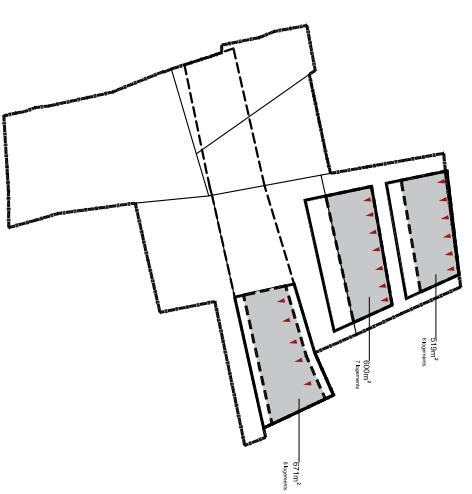
Emprise Foncière 1 : 10054 m²
Emprise Foncière 2 : 9567 m²



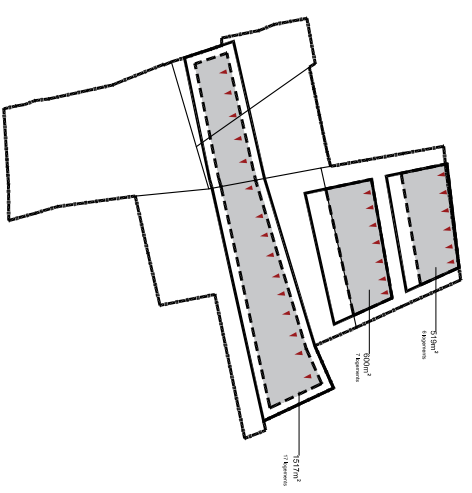
TRAMES PAYSAGERES:
L'EAU
LES RUES ET LA PLACE
LES JARDINS



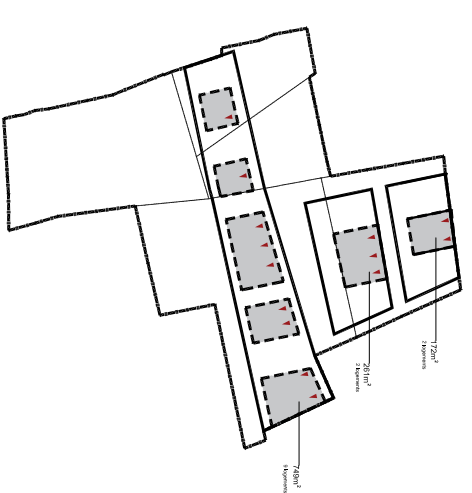
DEMOLITIONS
RETROCESSION



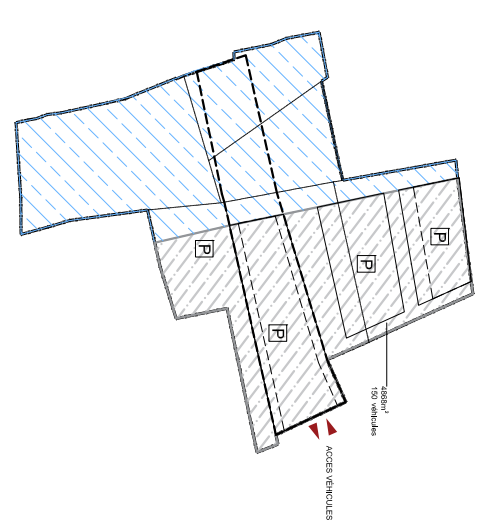
MASSES
CONSTRUITES
RDC
21 logements



MASSES
CONSTRUITES
R+1
30 logements

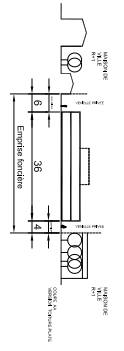
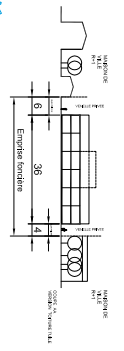
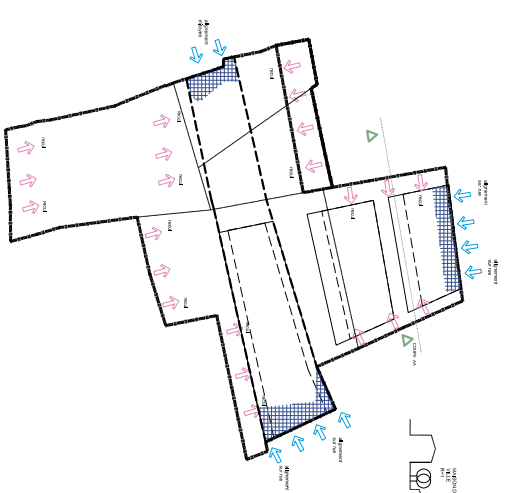


MASSES
CONSTRUITES
R+2
13 logements



STATIONNEMENTS

LES FRANGES



DONNEES DU PROJET:
Emprise foncière 2
Desserte sur rue uniquement
Stationnement souterrain

Hypothèse en R+1 : 51 Appartements
Hypothèse en R+2 partiel : 64 Appartements

